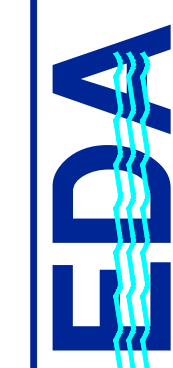
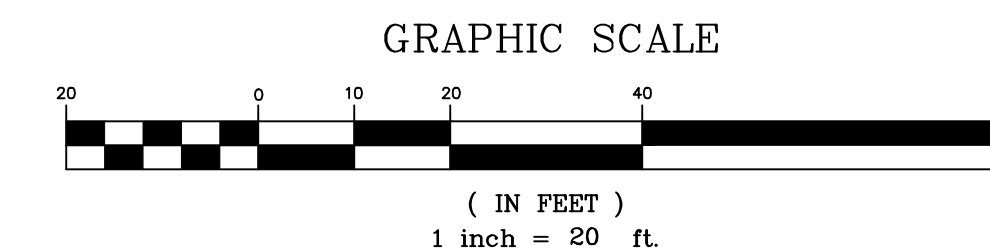
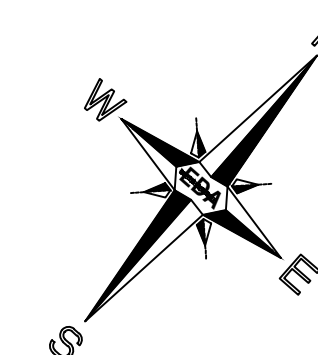
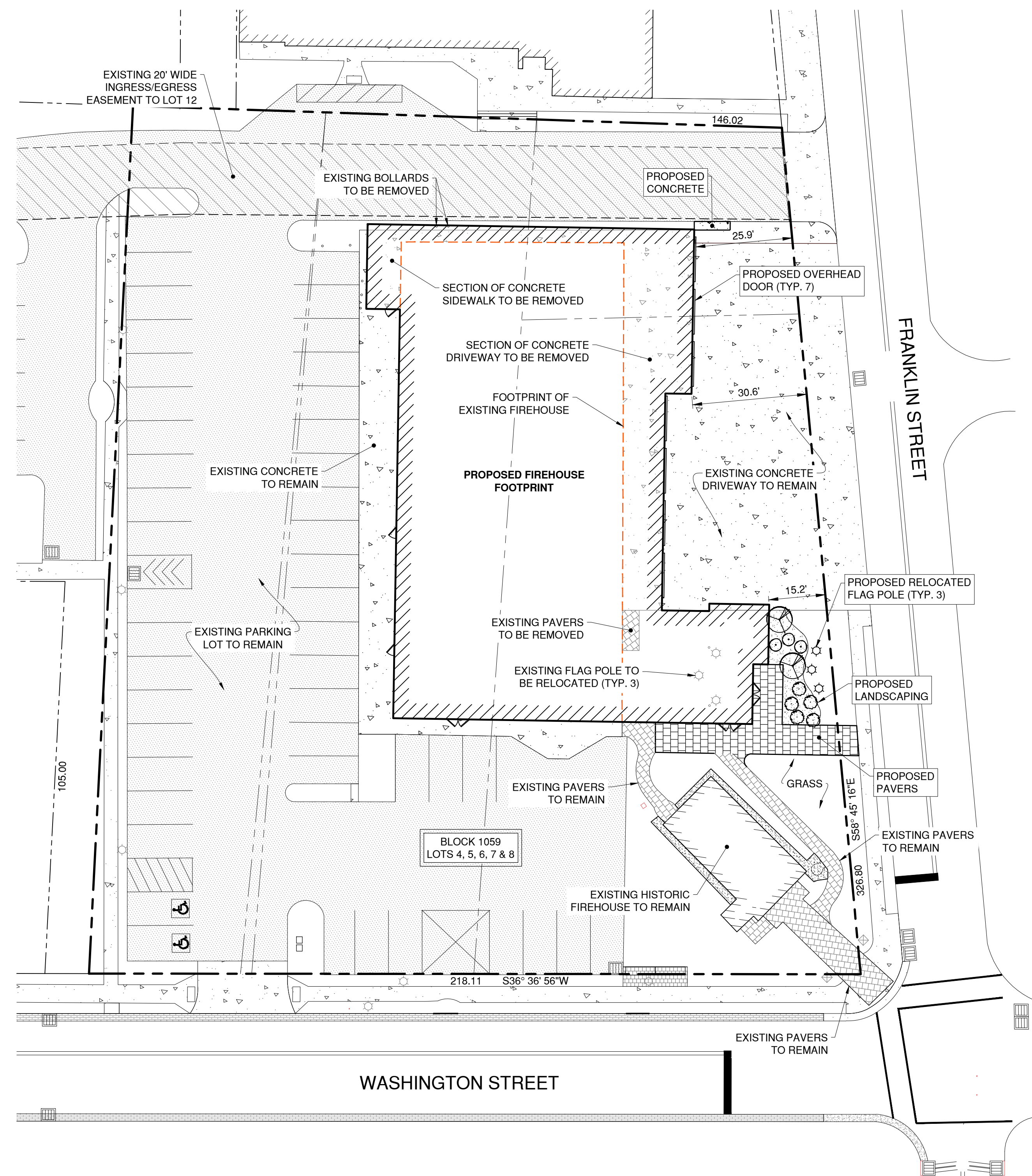


# SITE PLAN



Engineers - Landscape Architects - Planners



Engineering Design Associates, P.A.  
 Environmental Planners, Landscape Architects  
 CAMBRIDGE PROFESSIONAL OFFICES  
 500 COMMERCIAL STREET, SUITE 200  
 CAMBRIDGE, MASSACHUSETTS 02142  
 (609) 390-0332 • Fax (609) 390-9204 • www.engineeringdesign.com • CERTIFICATE OF AUTHORIZATION# 24062375009

**SITE PLAN**  
 BLOCK 1059, LOTS 4, 5, 6, 7 & 8  
 CITY OF CAPE MAY  
 CAPE MAY COUNTY, NEW JERSEY

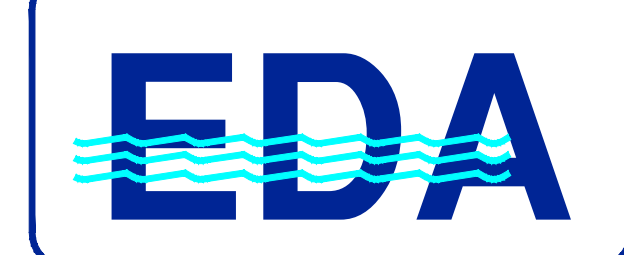
**VINCENT C. ORLANDO**

PROFESSIONAL ENGINEER  
 N.J.P.E. LIC. #32498



IF THIS PLAN OR DOCUMENT DOES NOT CONTAIN A RAISED SEAL IMPRESSION BEARING THE NAME AND REGISTRATION NUMBER OF THE ABOVE SIGNED PROFESSIONAL, IT MAY NOT BE AN AUTHORIZED COPY OF THE ORIGINAL DOCUMENT AND MAY HAVE BEEN ALTERED. REPRODUCTION OR FURTHER DISSEMINATION OF THE CONTENTS IN WHOLE OR IN PART REQUIRES PERMISSION IN WRITING FROM ENGINEERING DESIGN ASSOCIATES, P.A.

REVISION	DATE	BY



DATE: 4/19/2021	DRAWN BY: MAJ
SCALE: AS NOTED	CHECKED BY: VCO
PROJECT #: CM-100	SHEET: 1 OF 1